

USE RATES

Mix this product in the proportions as listed in the rates table below and deliver the spray solution through boom or high volume and hand held equipment.

SOLO USE

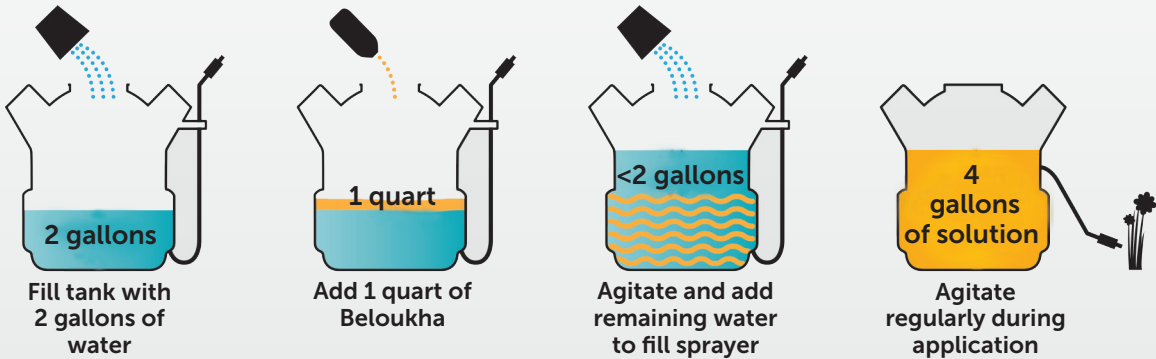
Use the following amounts of product (volume/volume) in a total spray volume of 75 to 200 gallons / acre using boom, hand-held or high volume equipment. See label for complete Use instructions.

- Use a 3.5-5.75% solution for control of annual weeds, mosses and cryptogam. Use the lower end of the rate range for young, succulent and actively growing weeds and the higher end of the rate range for weeds taller than 6 inches in height or weeds in the flowering stage. Use the higher rate for herbicidal control mosses, lichens and other cryptogams on structures and surfaces.
- Use a 5.75-8.0% solution for burndown of perennial herbaceous plants, established weeds, and control of sucker growth. Use the high end of the rate range for perennial weeds at or past the flower stage or "hardend" weeds.
- Use an 8.0-11.5% solution for maximum vegetative burndown, edging or foliar trimming. Repeat application as required to maintain desired level of weed control and to control emerging seedlings and underground growth.

Note: When using Beloukha, be sure to avoid contact with or drift onto lawns and desirable plants.

RATE TABLE	Amount of Beloukha Garden Herbicide for Following % Solution (volume/volume)				
Desired volume of spray solution (gallons)	1%	3.5%	5.75%	8%	11.5%
1	1 1/3 oz.	4 2/3 oz.	7 2/3 oz.	10 2/3 oz.	15 1/3 oz.
5	6 2/3 oz.	23 1/3 oz.	1 1/4 qt.	1 2/3 qt.	2 1/2 qt.
10	13 oz.	1 1/2 qt.	2 1/3 qt.	3 1/4 qt.	4 2/3 qt.
50	2 qt.	1 3/4 gal.	3 gal.	4 gal.	5 3/4 gal.
75	3 qt.	2 2/3 gal.	4 1/3 gal.	6 gal.	8 2/3 gal.
100	1 gal.	3.5 gal.	5.75 gal.	8 gal.	11.5 gal.

Instructions for mixing a 6.5% solution of Beloukha in a 4 gallon back pack sprayer.



Beloukha[®]

Garden Herbicide

Sunflower, bio-based contact herbicide.

- **CONTACT**, non-selective, broad spectrum, foliar-applied herbicide.
- **LOW ODOR** - improved formulation
- **BIODEGRADABLE** - Soil organisms degrade the 9 carbon chain (C-9) producing CO₂ and H₂O, that remains in the carbon cycle of life.
- **PROVIDES BURNDOWN** of both annual and perennial broadleaf and grass weeds, as well as most mosses and other cryptogams.
- **FAST ACTING**- visible effects on most weeds occur within hours.
- **VERSATILE** - use on turf, landscape, hardscape and ornamental areas.



USDA
CERTIFIED
BIOBASED
PRODUCT
PRODUCT 82%

Beloukha®

Garden Herbicide



ACTIVE INGREDIENT:

Pelargonic Acid*	51.98%
OTHER INGREDIENTS:	48.02%
TOTAL:	100.00%

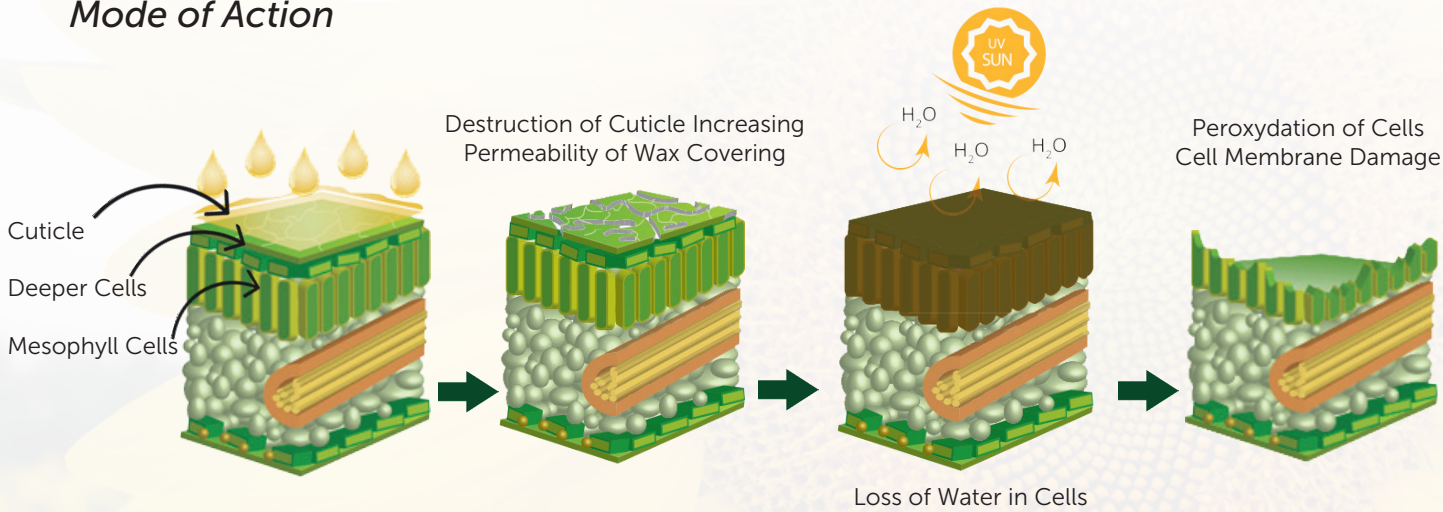
*Contains 4.21 lbs. of pelargonic acid per gallon of product.

Beloukha® is a sunflower, bio-based, foliar-applied, contact herbicide. The lipophilic part of the fatty acid attacks and destroys the cell membranes of the plant epidermis causing rapid tissue dehydration.

Beloukha provides burndown of both annual and perennial broadleaf and grass weeds, as well as most mosses and other cryptogams. Beloukha is fast acting and effects are visible within 2 hours of application. It's also proven to be rain fast within 2 hours of applying.

Beloukha is effective on most weeds in various weather conditions, working faster when used in, sunny, hot, dry weather with an ideal concentration rate between 5 and 8% (6.5 - 10.5 ounces of Beloukha per 1 gallon of water).

Mode of Action



Tips for a successful application.....



PREPARATION

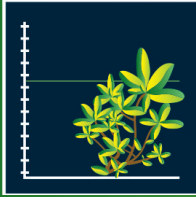
Beloukha should be applied for weed management at the recommended rate to dry foliage. (See Rate Chart on Reverse)



WEATHER CONDITIONS

Beloukha can be applied at any time, however, optimum results will be achieved on a sunny and warm temperature day. Sun and warmth will provide visual results within hours.

Beloukha is rainfast in 2 hours.



WEED STAGE

Beloukha should be applied to smaller weeds at early stages of development. Higher rates should be used for larger, more established weeds.



SPRAY COVERAGE

Beloukha is a contact herbicide, therefore, full coverage of the targeted weed is essential for optimum results. Covered areas of weeds will not be affected by the treatment.

Beloukha in Action....



Before Beloukha



After Beloukha



Before Beloukha



After Beloukha



Before Beloukha



After Beloukha



Before Beloukha



After Beloukha



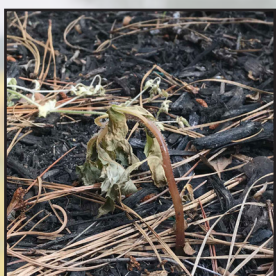
Before Beloukha



After Beloukha



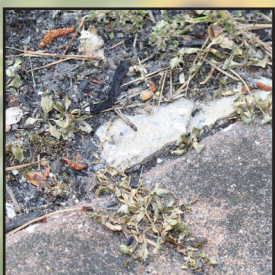
Before Beloukha



After Beloukha



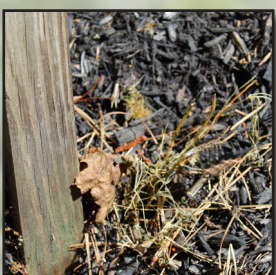
Before Beloukha



After Beloukha



Before Beloukha



After Beloukha



Kills Weeds....Naturally